

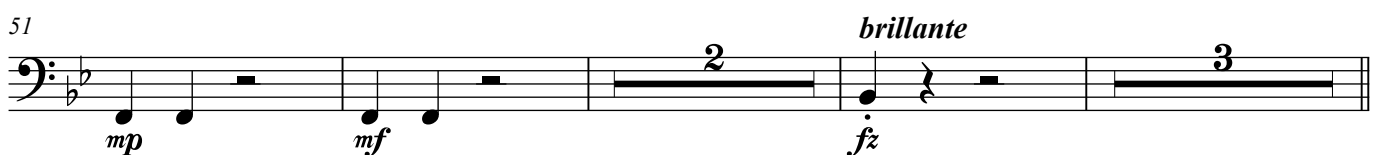
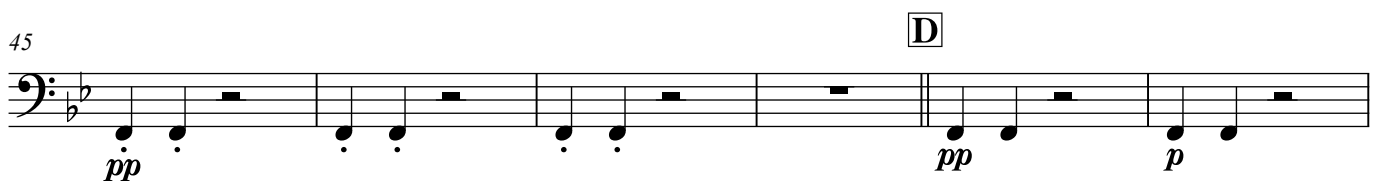
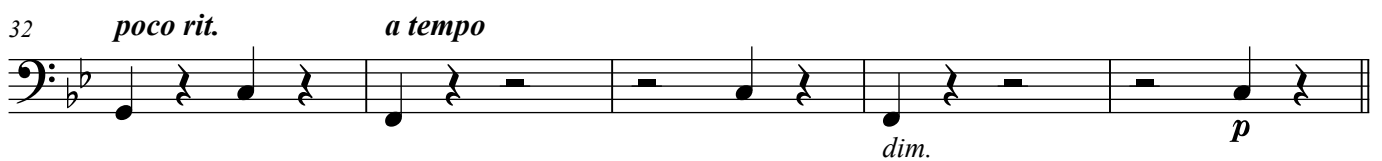
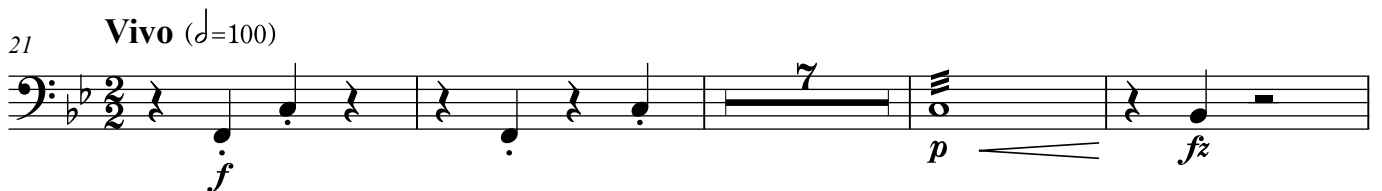
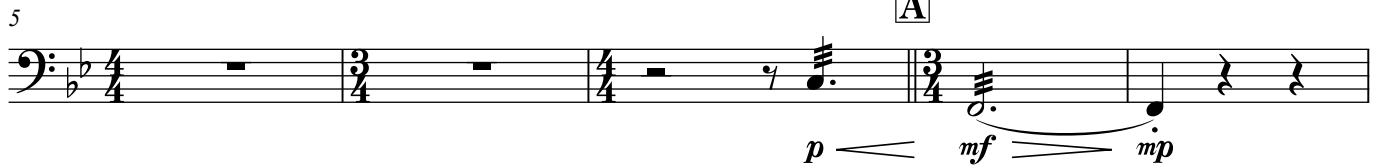
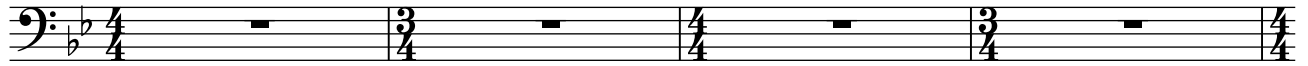
Timpani

序曲 《徳川頼貞》 Overture to Raitei Tokugawa : Tokyo

作曲：エドワード・ウッダール・ネイラー
編曲：大橋 晃一

Edward Woodall Naylor (1867-1934)
arranged by Koichi Ohashi

Andantino (♩=58)



Overture to Raitei Tokugawa : Tokyo
Timpani

59 **E** *largando, poco rit.*

a tempo

59 *ff* *f*

64

ff

69 **F**

f

77 **G**

poco rit. **H** *a tempo*

5 7 2 14
(Glockenspiel)

105 **I**

pp *pp* *pp*

114

ritenuto

J *a tempo*

pp *pp* *f*

121

f

132

K

poco rit.

a tempo

rit. molto

p *fz* *f* *ff*

137

a tempo

f *dim.* *p*

142 **L**

pp *pp*

Overture to Raitei Tokugawa : Tokyo
Timpani

150 **M**

pp *pp* *p*

156 *brillante*

mp *mf* *fz*

164 **N** *largando, poco rit.* *a tempo*

ff *f*

169

ff

174 **O** **P** *Animato*

f

181 *poco largando a tempo*

f *ff* *ff*

187 **Q**

f

193 *poco largando a tempo*

f *ff*

199 **R** *Con fuoco*

ff

205 *Largo* (♩=90)

ff