

IR

Fundamental concept for Wakayama IR (revised)

~Vision for resort-type IR in Wakayama Prefecture~

Wakayama Prefectural Government



1 What is an IR (Integrated Resort)

2 Resort-type IR envisioned by Wakayama

3 Proposed site, Wakayama Marina City

4 Why Wakayama wants to establish an IR

5 IR issues and countermeasures

6 Next steps

What is an IR (Integrated Resort)

What is an IR (Integrated Resort)

- IRs are not just a casino hotel — they are **integrated complex facilities (including core facilities*) to attract tourists.**
- Japanese law limits the casino (gaming) area to **3% or less of the total IR floor space.**
- IRs will be developed and operated by private operators.
➔ **Only operators which pass thorough background investigations can operate in Japan.**





Photo by: Genting Singapore Limited. All Rights Reserved

Photo: Singapore Resorts World Sentosa

※ Core facilities

- International conference center facilities, exhibition facilities, facilities to promote the appeal of tourism in Japan, facilities to propose and arrange domestic sightseeing visits, lodging facilities etc.

What is an IR (Examples of benefits from IR investments in other countries)

Realization of large-scale private sector investment

■ Singapore

- Marina Bay Sands: Approx. 487 billion yen
- Resorts World Sentosa: Approx. 522 billion yen

■ Macau

- Studio City: Approx. 387 billion yen

Economic benefits to the region

	Marina Bay Sands (Singapore)	Crown Entertainment Complex (Australia)	Solaire Resort & Casino (Philippines)	
Cost of development (Approximate)	487 billion yen	140 billion yen	120 billion yen	Preferential local procurement of construction materials, etc.
Number of employees (Approximate)	9,500	9,200	5,600	Preferential local employment
IR Total Revenue (Approximate)	320 billion yen	167 billion yen	70 billion yen	Increase in tax revenue
IR Total Number of Visitors (Approximate)	45 million	17 million	7.3 million	Increase in non-resident population and tourism consumption

Source: Research by Wakayama Prefecture

What is an IR (As designated by the country's laws)

IR envisioned by National Government

○By developing an integrated IR facility that includes a casino, the objective is to create extended stay tourism that is internationally competitive and attractive, thereby contributing to the promotion of tourism and the regional economy as well as to the improvement of public finances

Designation of IR areas

Number of IR areas	Statutory maximum of 3 areas
Requirements/standards of core facilities	Must be of internationally competitive scale representative of Japan (Unprecedented scale and quality)
Consensus building in the region	A decision by the prefectural assembly, agreement by the municipality where the IR is to be established and public hearings, are required
IR establishment process	① Prefecture selects private operators through public offering ② Prefecture and private entities jointly prepare the plan ③ The prefectural governor submits the plan to the Minister of Land, Infrastructure, Transport, and Tourism, and the minister approves it

Casino restrictions for Japanese citizens

Visit limits	Up to 3 times in 7 days and 10 times in 28 days
Method used to confirm ID and number of visits	Confirmation of identity using "My number card"
Entry fee	6,000 yen
Countermeasures against gambling addiction	Japanese nationals are only allowed to use cash (credit card transactions are not permitted) Operators are obliged to exclude problem gamblers based on requests made by the gamblers themselves or their family members

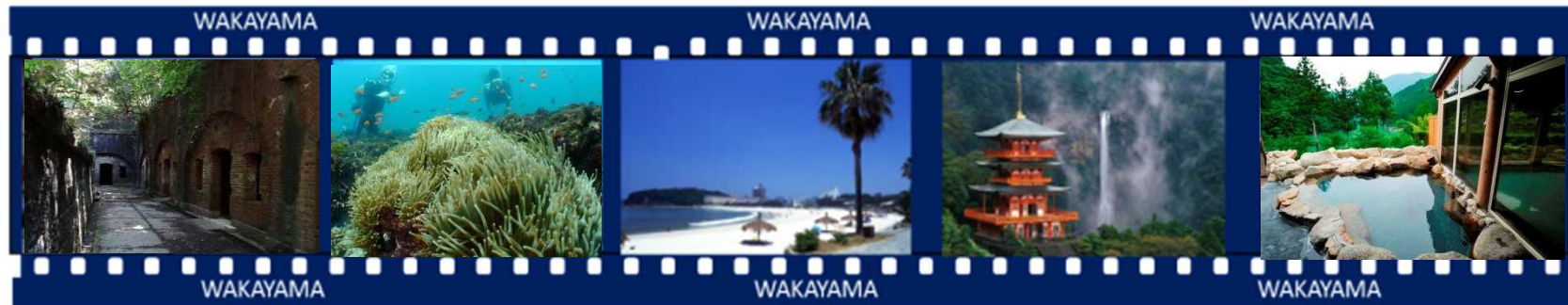
What is an IR (Summary)

- An IR is more than just a casino.
- IRs are integrated tourism facilities that **create jobs** as well as **contribute to the promotion of tourism and the improvement of public finances**, leading to a revitalization of the region
- **Establishment and operation of an IR will be a strong driver to achieve targets set by the national government for 2030 (Number of foreign tourists to Japan: 60 million, total consumption by tourists: 15 trillion yen)**



- 1 What is an IR (Integrated Resort)
- 2 Resort-type IR envisioned by Wakayama**
- 3 Proposed site, Wakayama Marina City
- 4 Why Wakayama wants to establish an IR
- 5 IR issues and countermeasures
- 6 Next steps

Resort-type IR situated among diverse tourist attractions



SPORTS

Sailing
Surfing
Fishing
Diving
Golf
Rafting
e-Sports



WELLNESS (HEALING)

Hot springs
Medical tourism
Glamping
Music festivals
Koyasan
Kumano Kodo



Resort-type IR envisioned by Wakayama (Contents ①)

- **Luxurious conference halls** for board meetings of top-tier companies as well as international academic conferences and conventions
- **A main conference hall** capable of large scale meetings with over 5,000 participants



Resort-type IR envisioned by Wakayama (Contents ②)

- **All-weather, all-purpose arena and exhibition facilities** that can host international sports competitions, e-Sports competitions, live events, and incentive tours with over 1,000 participants

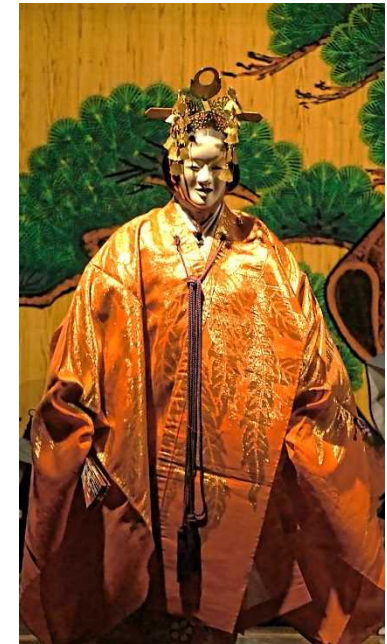


(C) 1999-2019 OSAKA MOTOR SHOW

* Image is for illustration purposes

Resort-type IR envisioned by Wakayama (Contents ③)

- Facilities to promote the appeal of tourism through performances etc. that leverage tradition, culture, the arts etc.



Resort-type IR envisioned by Wakayama (Contents ④)

- **One-stop tour desk** offering all tourist services such as reservation and transportation for tourist destinations inside and outside the prefecture (multi-lingual concierge always on duty)
- **VR theater** enabling simulated experience of sightseeing spots



Resort-type IR envisioned by Wakayama (Contents ⑤)

- **Luxury 5-star hotel** to accommodate VIPs from all over the world
(assumptions on the scale of 2,500 rooms)



Resort-type IR envisioned by Wakayama (Contents ⑥)

- Restaurant districts serving mainly world-renowned Japanese cuisine and high-end shopping malls offering traditional crafts and specialties from across the Kansai area



Resort-type IR envisioned by Wakayama (Contents ⑦)

○ Interactive gaming center utilizing VR technology



Resort-type IR envisioned by Wakayama (Contents ⑧)

- Facilities to market high-end prefectural products, centered on agricultural and fishery products, to the world



Resort-type IR envisioned by Wakayama (Promotion of “Workation”)

○ **Base for “Workation”** (working while taking vacation)



Resort-type IR envisioned by Wakayama (Host events)

- Cooperate with IR business operators to host **international film festivals, sports competitions, e-Sports competitions, and cabinet-level meetings** etc.



©国際女性ビジネス会議 International Conference for women in Business 2018, all rights reserved



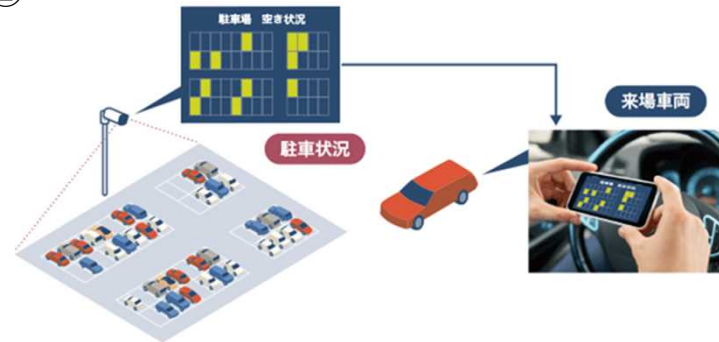
Resort-type IR envisioned by Wakayama (Introduce new technology)

- Utilize new technology to service the IR area
 - ① Adopt energy systems using natural resources such as hydrogen
 - ② Alleviate congestion by transmitting information such as available parking spaces using ICT
 - ③ Run automated buses within the IR area
 - ④ Install biometric authentication systems such as palm vein authentication for checking in and payments
 - ⑤ Execute disaster control with image distribution systems that use digital signage etc.

①



②



③



④



⑤



Resort-type IR envisioned by Wakayama (Examples of IRs in other countries)

Overseas IRs were used as a model for Wakayama prefecture



- Located on the coast (waterfront)
- A resort type facility
- Close to an international airport

Location	Australia Gold Coast	Population	Access from international airport	Overview of facilities
		Approx. 580 thousand	Approx. 30 minutes from Gold Coast Airport by car	Casino: more than 1,400 gaming machines Hotel: 596 rooms (expected to increase to 1,400) Convention: capacity up to 2,300 people

Views of facilities



Location	Philippines Paranaque	Population	Access from international airport	Overview of facilities
		Approx. 650 thousand	Approx. 15 minutes from Ninoy Aquino International Airport by car	Casino: more than 1,800 gaming machines Hotel: 800 rooms Theater: 1,760 seats

Views of facilities



Resort-type IR envisioned by Wakayama (Examples of IRs in other countries)

Location	Singapore Sentosa	Population	Access from international airport	Overview of facilities
		Approximately 5.61 million people (country's population)	Approximately 30 minutes by car from Singapore's Changi International Airport	Casino: more than 2,400 gaming machines Hotel: 1,600 rooms Convention: capacity up to 6,500 people

Views of facilities

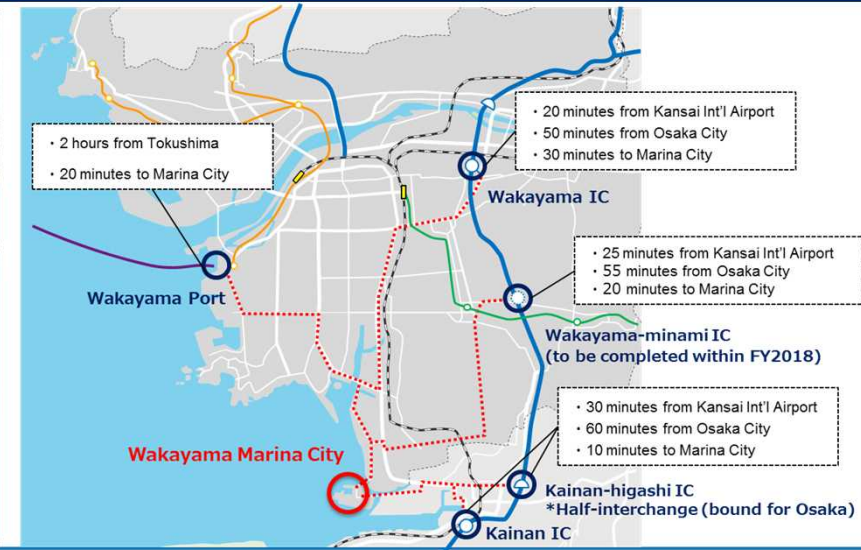
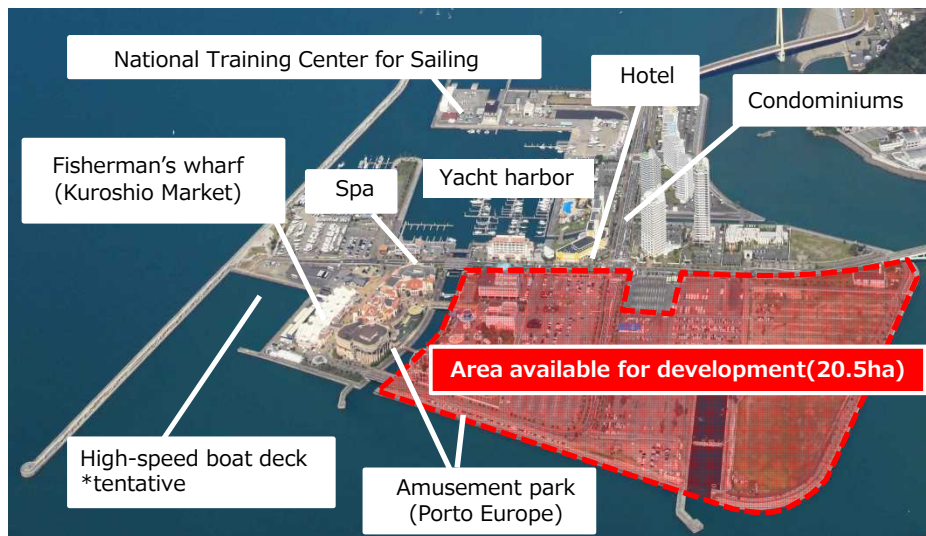


*Four photos above by: Genting Singapore Limited. All Rights Reserved

- The Wakayama IR will be a **resort-type IR** situated among diverse tourist attractions
- Realize **a scale and quality that are internationally competitive**
- **Host international events at a global level**

- 1 What is an IR (Integrated Resort)
- 2 Resort-type IR envisioned by Wakayama
- 3 Proposed site, Wakayama Marina City**
- 4 Why Wakayama wants to establish an IR
- 5 IR issues and countermeasures
- 6 Next steps

Proposed site, Wakayama Marina City (Advantages)



○ Proximity to Kansai International Airport

- **Approximately 30 minutes by car** from Kansai International Airport to the nearest interchange
- **Maritime transportation can be utilized** such as the high-speed boat from/to Kansai International Airport and shuttle ship service from/to cruise ships calling at Wakayama port.

○ Close to Kyoto, Osaka, and Kobe

- **Excellent location** with many interchanges in the area and with the IR facility as the base, not only are there tourist sites in the prefecture close by, but Osaka is **60 minutes** away and Kyoto and Kobe are within **90 minutes**

○ Able to start construction immediately

- Artificial island completed in 1994. **The whole area has been leveled and construction can begin quickly** (accordingly, investments can be recovered quickly).
- **20.5 ha (highlighted in red above, with possibilities for expansion)** available to be used for IR *Similar scale to Singapore's Marina Bay Sands

○ Sacred location for marine sports and leisure

- With the establishment of **the National Training Center for Sailing**, this will become Japan's preeminent sailing spot, hosting international competitions, training athletes preparing for the Tokyo Olympics, and will be the permanent host of high school sailing competitions
- **A yacht harbor capable of anchoring ships up to 130 ft long** (approximately 220 boats can be anchored at sea/280 boats stored on land)

Proposed site, Wakayama Marina City (Access)

Access to Keihanshin area

○ By Train

Approx. 60min to Osaka

Approx. 90min to Kyoto & Kobe

○ By Car

Approx. 60min to Osaka

Approx. 90min to Kyoto & Kobe

To provide smooth access to sightseeing spots in the prefecture, extension of Kinki Expressway Kisei Line as well as development of Susami-Kushimoto National Road and Shingu-Kihou National Road are currently underway in addition to the recent completion of Keinawa Expressway and Daini-Hanwa National Road.



Future development

Development of stress-free transportation network

Efforts will be made to promote the establishment of new direct bus routes from terminals in major cities as well as the development of an environment which can smoothly provide various means of transportation such as buses, taxis, rental cars and bicycles according to tourist needs for more convenient connections between primary transportation hubs and secondary transportation.

Proposed site, Wakayama Marina City (Multiple access routes)

○Able to select access routes that suit different traveling styles

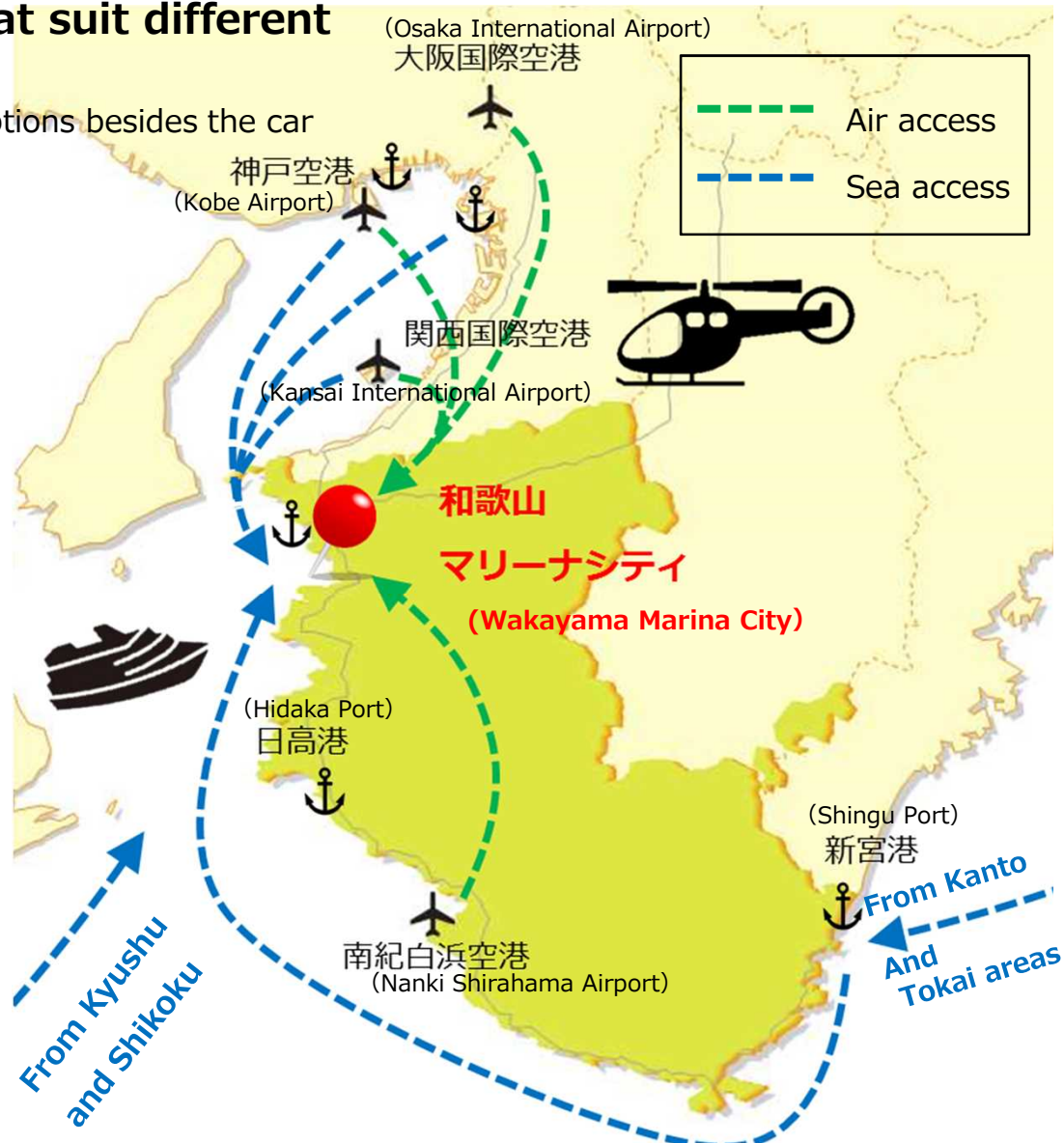
»Currently considering alternative access options besides the car

Helicopter

Kansai International Airport	Wakayama Marina City	13min
Osaka International Airport		30min
Kobe Airport		25min
Nanki Shirahama Airport		25min

High-speed boats etc.

Kansai International Airport	Wakayama Marina City	65min
Osaka Minami Port		105min
Kobe Airport		90min
Shingu Port		225min



*Wakayama Prefecture's estimates

Proposed site, Wakayama Marina City (The surrounding environment)

Located in Wakanoura Bay, **home to a Japan Heritage site named “Treasure House of Scenic Beauty: Wakanoura,”** the area around Marina City is full of attractions including a base for marine leisure and sports, spots to enjoy beautiful scenery, rich history and culture, and fresh seafood markets.



Proposed site, Wakayama Marina City (Scenic views around Wakayama Marina City)



Proposed site, Wakayama Marina City (Coordination with tourism and food resources)

Culture

Rich in cultural heritage such as the UNESCO World Heritage sites "Koyasan and Kumano," highly recommended by world-renowned travel guides such as "Lonely Planet" and "Michelin Green Guide."



Food

Known as the "Fruits Kingdom," where a wide variety of fruits are available throughout the year, and rich in seafood, boasting the highest volume of fresh tuna landings in Japan. Wakayama-produced *ume* (plums), mandarin oranges, peaches and persimmons are best known in Japan and highest quality in the world.



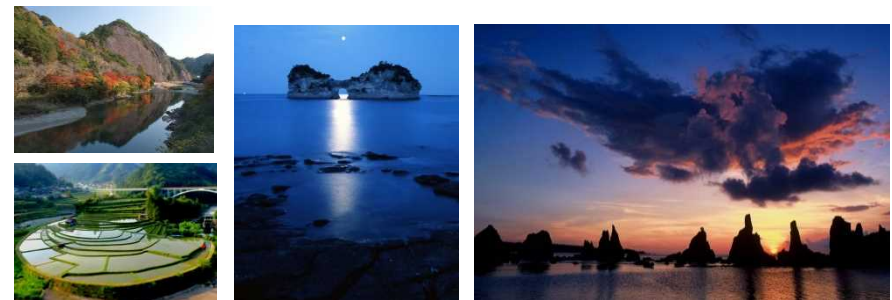
Hot Springs

Home to some of the best hot spring resorts in Japan, Shirahama Hot Spring and Kumano-Hongu Hot Spring, both listed in "Japan's 100 Best Hot Springs," Wakayama boasts the richest hot spring resources in the Kinki region.



Nature

Full of spectacular natural scenery throughout the four seasons such as waterfalls, gorges and beaches



Why Wakayama wants to establish an IR (wide variety of activities)

Nature-based activity tourism is a leading trend in tourism globally — Wakayama has great potential as a tourist destination with its wide variety of recreation. Blessed with a long coastline, deep mountains and many rivers, **almost every kind of experience-type tourism is possible.**

A map of Wakayama Prefecture is shown in the center, with orange lines connecting various geographical features to boxes containing images of recreational activities. The activities include:

- Kataonami Beach**: A sandy beach with people and umbrellas.
- Surfing**: A person riding a wave on a surfboard.
- Cycling**: A group of people with bicycles on a path. Text: サイクリング王国わかやま
- Paraglider**: A person flying a paraglider over a green landscape.
- Sailing**: A sailboat on the water.
- Flyboarding**: A person flying over the water on a flyboard.
- Cruising**: A speedboat on the water.
- Wakeboarding**: A person riding a wakeboard.
- Fishing**: A fishing tournament with a large fish on a stage. Text: BILLFISH TOURNAMENT
- Aikido**: Two people practicing Aikido in a dojo. Text: 合気道
- Sport Rafting**: A group of people in a raft navigating rapids.
- Cliff Diving**: A person diving from a cliff. Text: 日本初開催
- Free Climbing**: A person climbing a cliff face.
- Fishing**: A group of people on a boat.
- Shirarahama Beach**: A sandy beach with thatched umbrellas.
- Diving**: A person underwater with a scuba tank.
- Trek the Kumano Kodo Pilgrimage Routes**: A stone path through a forest.
- Whale Watching**: A boat with people watching whales.

Proposed site, Wakayama Marina City (Business feasibility ①)

Facilities such as a luxury hotel, multi-purpose arena, etc., a tour desk and parking are to be developed in order to make the IR development an attractive project for investment in terms of business feasibility. International convention center and exhibition hall are to be developed in order to attract visitors.

Results of business feasibility analysis

Expected size of IR		Amount of investment	279.9 billion yen
Floor Space	457,183m ²	Payout period	8.7 years

【Facilities envisioned (preconditions)】

- **Total Area** . . . 205,000m²
 - **Luxury hotel**
High-grade luxury hotel with more than 2,500 guest rooms and a casino
 - **International convention center/exhibition hall**
Facility with floor space of 50,000m² including multi-functional arena and high-class meeting rooms
 - **Other facilities**
Facility to promote attractions in Japan, tour desk, parking
- ※ However, these assume the lower limit, and we are considering a facility that meets the standards of the governmental and ministerial ordinances to be determined in the future

The operation of an IR in Wakayama Prefecture will have adequate business feasibility, as the results of feasibility analysis shows that the investment can be recovered in several years.

Proposed site, Wakayama Marina City (Business feasibility ②)

Extracts of proposals from **seven overseas IR business operators based on RFI**
(investment intentions survey)

- About the investment amount
 - ➔ Several business operators are proposing investments exceeding the 279.9 billion yen calculated by Wakayama Prefecture
 - ➔ The majority of plans assume recovery of investment within eight years

The main proposals from business operators

○ About the hotels



Establish hotels with 2,500 rooms including 6-star hotels



Establish hotels with a maximum of 3,000 rooms



In addition to approximately 2,200 hotel rooms, establish residential apartments

○ About the international conference halls and exhibition facilities



In addition to a 50,000 square meter conference hall/exhibition facility, it will be equipped with a 15,000 square meter arena



Establish a scale and quality that are unprecedented in Japan

○ About other facilities

Proposals for aquarium, botanical garden, museum, theater, theme park, shopping mall, pool etc.

Proposed site, Wakayama Marina City (Accessibility to Osaka)

Synergies resulting from the IR's proximity to Osaka

Osaka IR and Wakayama IR

1. IRs with **different concepts**
2. **Easy transfer** between the IRs

They function as facilities that are **mutually capable of transferring customers**

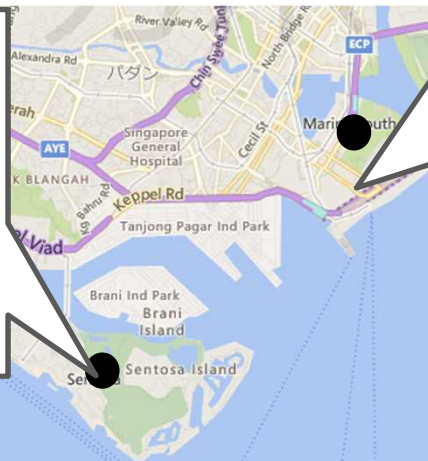
By enabling tourists to transfer between the two IRs, **create synergistic economic effects**



Synergies are already being realized in Singapore



Resorts World Sentosa*
(Partial opening in 2010)



Marina Bay Sands (Opening in 2010)

○They are approximately only a 30-minute drive from each other, but the operations are smooth due to differences in concept

- Resorts World Sentosa (Resort type)
- Marina Bay Sands (Urban type)

*Photo by: Genting Singapore Limited. All Rights Reserved.

- **Wakayama Marina City holds high potential as an IR location**
- **IR business operators also highly rate its business feasibility**

- 1 What is an IR (Integrated Resort)
- 2 Resort-type IR envisioned by Wakayama
- 3 Proposed site, Wakayama Marina City
- 4 Why Wakayama wants to establish an IR**
- 5 IR issues and countermeasures
- 6 Next steps

Why Wakayama wants to establish an IR (Economic effects, job creation effects ①)

Estimated economic ripple effects and job creation effects created by investment in construction and operation assuming a certain scale and number of visitors of the IR to be developed in Wakayama Marina City are shown below.

Summary of analysis of economic ripple effects, etc. (in Wakayama Prefecture)

Number of IR visitors (Approximate)	4 million per year
Investment in construction (Approximate)	280 billion yen
Economic ripple effects (Approximate)	300 billion yen per year
Job creation effects (such as operations) (Approximate)	Employment of 20,000 people

(Reference) Current situation in Wakayama Prefecture (FY2015)

Total number of tourists (Approximate)	33.4 million
Prefectural GDP (Approximate)	3,530 billion yen



- The above is calculated with the assumptions that 1. there are IRs in both Wakayama and Osaka 2. the scale of the facilities is small
- The results of the calculations are subject to change based on the government's attitude and governmental and ministerial ordinance standards

Why Wakayama wants to establish an IR (Economic effects, job creation effects ②)



Farming, fishing and forestry
Approx. 1.8 billion yen
 (Approx. 400 people · 0.9% increase)



Food and beverage services
Approx. 24.6 billion yen
 (Approx. 5,600 people · 21.5% increase)



Waste disposal
Approx. 2.7 billion yen
 (Approx. 340 people · 10.6% increase)



Construction repairs
Approx. 1.9 billion yen
 (Approx. 130 people · 4.5% increase)



Food and beverage products etc.
Approx. 5 billion yen
 (Approx. 250 people · 2.0% increase)



Commerce
Approx. 12.6 billion yen
 (Approx. 2,900 people · 3.5% increase)



Security, cleaning etc.
Approx. 3.4 billion yen
 (Approx. 460 people · 3.5% increase)



Equipment repair etc.
Approx. 3.5 billion yen
 (Approx. 160 people · 4.6% increase)



Medical care and welfare
Approx. 2.2 billion yen
 (Approx. 240 people · 0.4% increase)

Economic ripple effects
(Approx. 300 billion yen)

IR

Increase in employment
(Approx. 20,000 people)



Laundry, barbers, beauty salons etc.
Approx. 0.8 billion yen
 (Approx. 260 people · 2.9% increase)



Electricity, gas and heat supply
Approx. 8.6 billion yen
 (Approx. 70 people · 4.5% increase)



Information transmission etc.
Approx. 4.9 billion yen
 (Approx. 150 people · 4.4% increase)




Lodging
Approx. 36 billion yen
 (Approx. 3,100 people · 42.5% increase)



Parking lots, conference halls, arena facilities etc.
Approx. 4.3 billion yen
 (Approx. 150 people · 11.8% increase)



Finance and insurance
Approx. 6.2 billion yen
 (Approx. 320 people · 3.0% increase)



Real estate
Approx. 11.6 billion yen
 (Approx. 200 people · 3.6% increase)



Rail, bus, taxi, transportation, travel etc.
Approx. 9.4 billion yen
 (Approx. 450 people · 2.3% increase)



Entertainment services
Approx. 142 billion yen
 (Approx. 2,700 people · 48.5% increase)

Why Wakayama wants to establish an IR (Gaming tax and entrance fee revenues)

● Gaming Tax

Gaming Tax (15% of GGR) will be paid to the prefecture/designated city, etc.

Gross Gaming Revenue (GGR)	140.1 billion yen
Gaming tax paid to Wakayama Prefecture (estimate)	21 billion yen

● Entry Fee

Japanese nationals will pay an entry fee of **6,000 yen** to enter the casino (National Gov.: 3,000 yen/Pref. Gov.: **3,000 yen**)

Number of visitors to casino	3,575 thousand (Japanese nationals: 2,448 thousand)
Wakayama Prefecture's revenue from entry fees (estimate)	7.3billion yen Overnight staying guests: 3.4 billion yen Day trip guests: 3.9 billion yen

*Estimated by Wakayama Prefectural Government based on business feasibility analysis

<Use of gaming tax revenue>
Budgets for measures for **promotion of tourism, local economy, social welfare and culture and art**

<Use of revenue from entry fees>
Budgets for measures for **promotion of local economy, social welfare and education**



Why Wakayama wants to establish an IR (Regional revitalization measures)

Initiatives for the development of Wakayama as a whole resulting from establishing an IR

Cross marketing

Proactively guide IR visitors outside of the IR and create a structure whereby they can enjoy Wakayama's sightseeing facilities and local businesses.

- Regional revitalization measure utilizing the IR card (distribute points and coupons to be used locally by IR members)
- Propose package tours to tourist attractions within the prefecture and experience-based tourist sites etc.



Coordination with higher education organizations

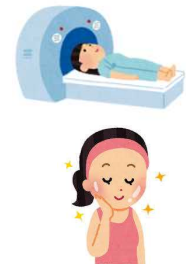
Coordinate with higher education organizations to realize an IR that is closely linked to the local area

- Implement employment programs for tourism and lodgings in university education
- Provide tourism education and transmit classes etc.



Medical tourism

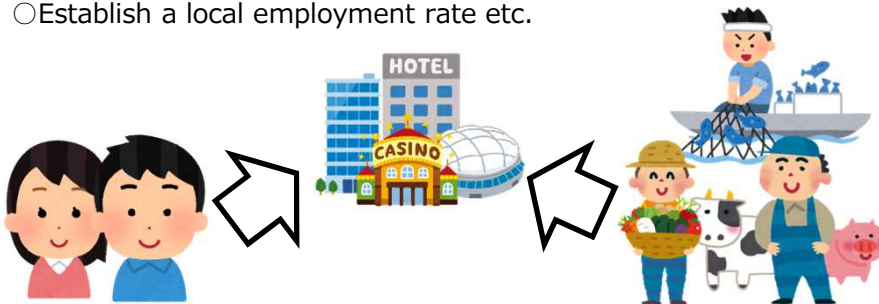
Receive IR visitors whose objectives are to take advantage of medical services such as for medical check ups and anti-aging treatments using state-of-the-art equipment, and coordinate with existing tourism resources such as healing spots at places including Takano and Kumano to attract long stay tourism.



Prioritization of local resources

Create a system where goods and services consumed by the IR prioritizes procurement from local resources.

- Use prefectural goods and establish a local priority procurement rate
- Establish a local employment rate etc.



Sports tourism

Link the new arena facilities to be established in the IR with the existing sports facilities in the prefecture to create a multifaceted sports revitalization plan.

- Attract new sports competitions and sports training camps etc.



Why Wakayama wants to establish an IR (In Singapore)

The impact on Singapore where 2 IRs were opened in 2010

	2009	2010	2011	Growth rate (2009 → 2011)
Number of tourists	9.68 million people	Opening of IRs	13.17 million people	136%
Tourism revenue	S\$12.6 billion		S\$22.2 billion	176%



Marina Bay Sands

+



Resort World Sentosa*

=

Travel consumption per foreign tourist **increased 30%**
Created approximately **22,000 jobs** (direct employment)

* Photo by: Genting Singapore Limited. All Rights Reserved.

- **IR is one of Wakayama Prefecture's best growth strategies**
- **The IR creates powerful economic ripple effects**

- 1 What is an IR (Integrated Resort)
- 2 Resort-type IR envisioned by Wakayama
- 3 Proposed site, Wakayama Marina City
- 4 Why Wakayama wants to establish an IR
- 5 IR issues and countermeasures**
- 6 Next steps

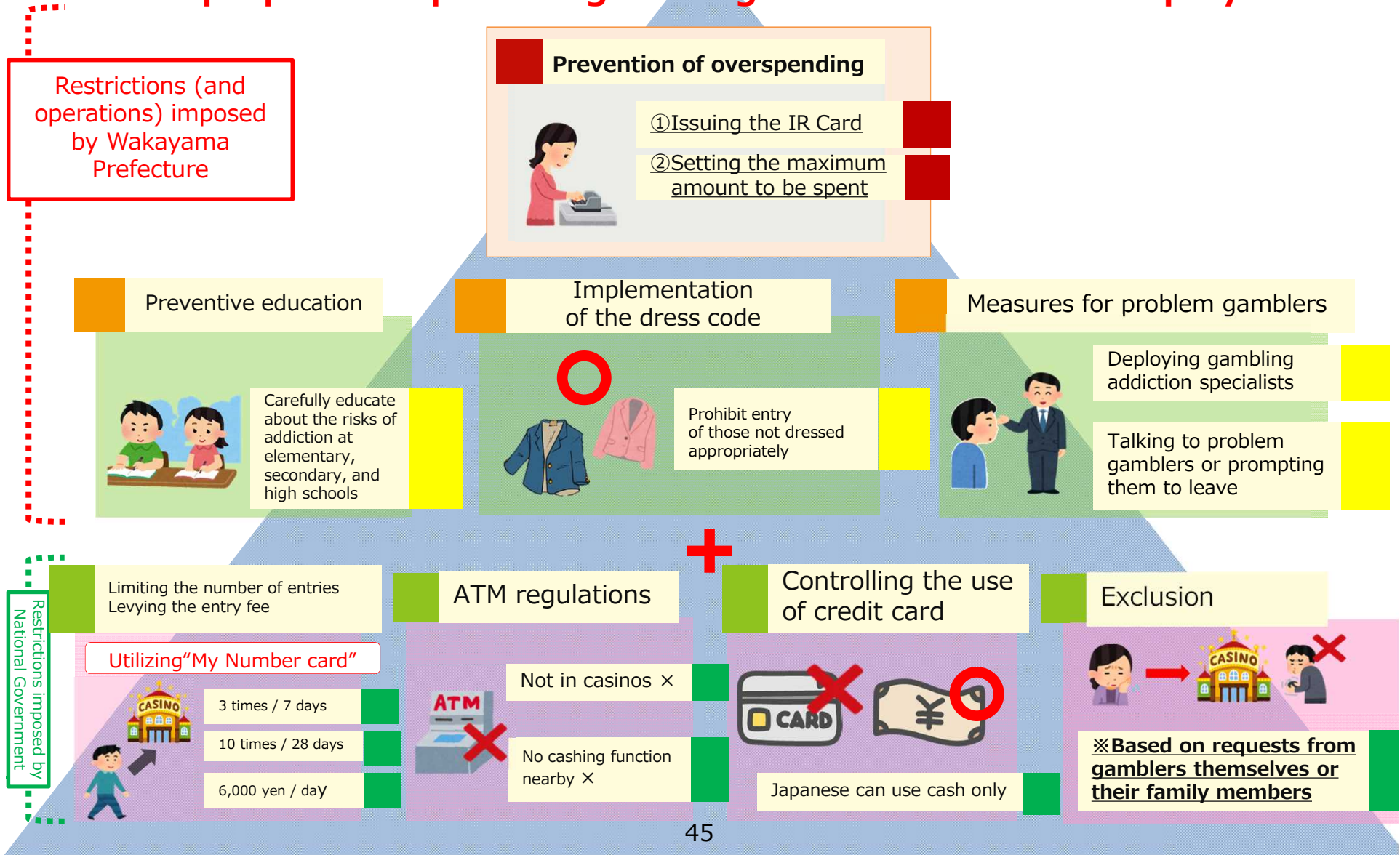
- **Increased risk of gambling addiction and bankruptcy**
- **Deterioration of public order**
- **Infiltration of antisocial forces**
- **Risk of money laundering**
- **Negative effect on minors**



IR issues and countermeasures

Can the prefectural citizens' lives be protected?

Well prepared to prevent gambling addiction and bankruptcy risk



IR issues and countermeasures (Measures to prevent gambling addiction and bankruptcy risk ①)

What is an IR card?

(e.g.)



■ Created at the time of entry into a casino facility

- Charge with cash to play at the casino
- Points awarded according to how much it is used



※ Business operators are also in agreement regarding its implementation

Merits of the IR card

○ Sets an upper limit to usage

- ➔ Prevents overspending unwittingly and avoids bankruptcy risk
- ➔ Forces a cool down period because of the need to re-charge it



○ Centrally control users' spending and how they are betting

- ➔ Easily identify users who are betting excessively to enable quick response to problems



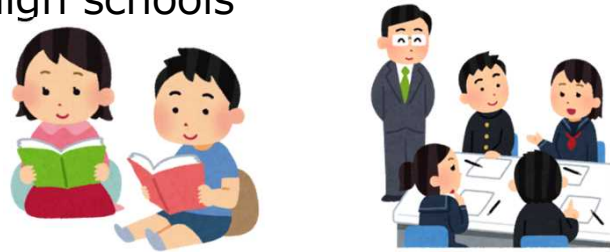
Regional revitalization using the IR card

- Points awarded each time it is used
- ➔ Create a system that enables it to be used outside the IR at shopping districts and tourist attractions



Preventive education

- Education and awareness of addiction prevention for children and guardians
- Create public awareness leaflets and conduct sessions with experts primarily for high schools



Addiction expert specialists

- Place specialists who have received expert education and training on addiction countermeasures within the casino facility
- Observe users and urge those showing signs of gambling addiction to suspend play and guide them to an assistance counter etc.



Dress code

- Prohibit entry of those with inappropriate dress code
- Raise the psychological barrier to enter to control ease of entry



Other measures

- Use image analysis to identify and respond to users with a tendency towards addiction
- Install sensors in casino chairs etc. to detect users in an abnormal state of excitement



Can the prefectural citizens' lives be protected?

Comprehensive countermeasures for maintenance of order and protection of minors

Maintenance of order

- Train and educate employees
- Prohibit or restrict entry of unsuitable persons into the casino
- **Monitor and provide security inside/outside the casino**



Exclusion of members of organized crime groups

- **Members of organized crime groups are not allowed to enter casino**
- **All visitors to the casino must be screened and verified to ensure they are not members of an organized crime group**



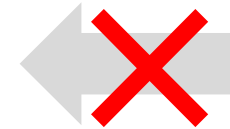
Measures for money laundering

- Confirm transactions and create/save transaction records
- Report suspicious transactions
- Report cash transactions exceeding a certain amount
- Develop internal control systems



Prohibit entry of those under the age of 20

- Entry into casino facilities by those under the age of 20 is **strictly prohibited**



Limit advertisements and solicitations to those under the age of 20

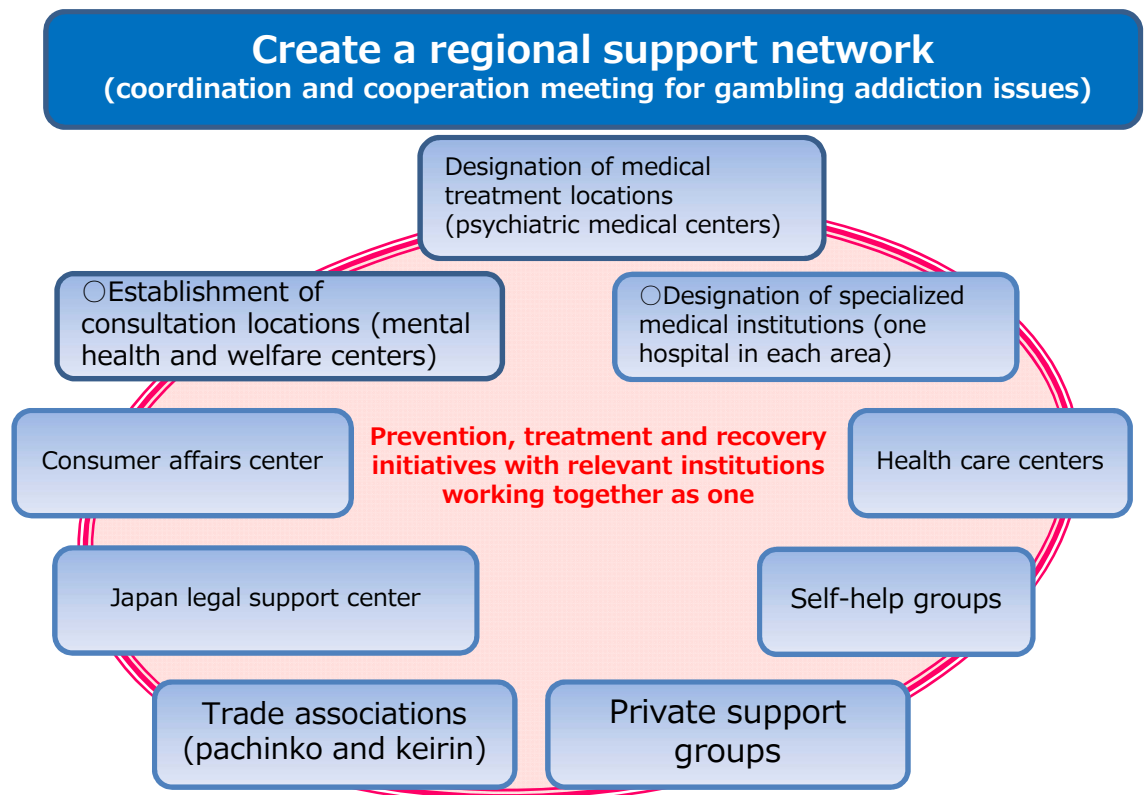
- **Prohibit the distribution of casino-related flyers etc. to, and solicitation of, those under the age of 20 both inside and outside the IR area**
- Advertisements and solicitations of casino businesses and facilities must indicate and explain the prohibition of entry for those under the age of 20 into casino facilities
- Advertisements and solicitations of casino businesses and facilities must **take into consideration its influence on those under the age of 20**



OWakayama IR promotion project team

- Comprises 20 related departments including the prefectural governor's department, board of education and police headquarters
- Examines the necessity and feasibility of ideas proposed for IR management operators such as transportation systems, countermeasures for addiction to gambling etc., participation in the planning process by corporations in the prefecture, coordination with regional tourism etc.

OGambling addiction countermeasures project team



ODetails of initiatives to strengthen addiction countermeasures

- Establish a medical system to provide specialized medical services in each area
- Strengthen consultation skills through training etc.
- Promote prevention through information sharing and public awareness
- Create a structure for relevant institutions to deal with addiction issues together through the "coordination and cooperation meeting for gambling addiction issues"

IR issues and countermeasures (Initiatives for consensus building in the region)

In order to introduce IR and maximize its impact across the prefecture, **understanding and cooperation by the prefectural citizens** is critical

Host **IR symposiums**

Hold as necessary

September 2017

Established a Wakayama IR promotion council led by Wakayama Prefecture, Wakayama City, and the Wakayama Chamber of Commerce and Industry

Establish a **promotion council** bringing together industry, academia and government



An explanation of the prefecture's initiatives relating to IR at a meeting of relevant trade associations

An explanation to **various industry groups**



Host study sessions

June 2018
The Wakayama prefectural assembly members (the then chairman of the assembly), conducted a study session, approximately 400 prefectural citizens participated

Hold as necessary

Explanations given in various parts of the prefecture utilizing **government debriefing sessions**



November 2017
Explained the prefecture's initiatives towards IR at a seminar hosted by the Federation of Small Business Associations

Explanations at seminars for prefectural citizens



Currently conducting periodic sessions in response to applications

Explanations taking advantage of the initiative "Delivery! Discussions with the Prefectural Government"



※The prefecture is currently accepting applications for discussions with the prefectural government. (Please see our website for more details.)

「出張！県政おはなし講座」のご案内

統合型リゾート(IR)についてご存知ですか？

カジノカジノって 言われるけど... I Rってなに？
I Rができれば 和歌山県はどうなるの？

和歌山県の I R 誘致に向けた取組や 考え方についてわかりやすくご説明します

○対象
県内に在住、もしくは通勤通学している15名以上のグループ ※応相談

○日時
原則としてご希望に応じます（土曜日、日曜日、祝日、夜間可）

○申込方法
実施希望日の1ヵ月前までに次のいずれかの方法で、企画総務課までお申込みください。

1. 電子メール
件名を「出張！県政おはなし講座」申込みとし、ご氏名、ご連絡先を明記の上、申込用紙を添付して、企画総務課まで送付してください。
申込用紙データ：和歌山県ホームページ
<https://www.pref.wakayama.lg.jp/prefg/020100/jr/kenseiohanasi.html>

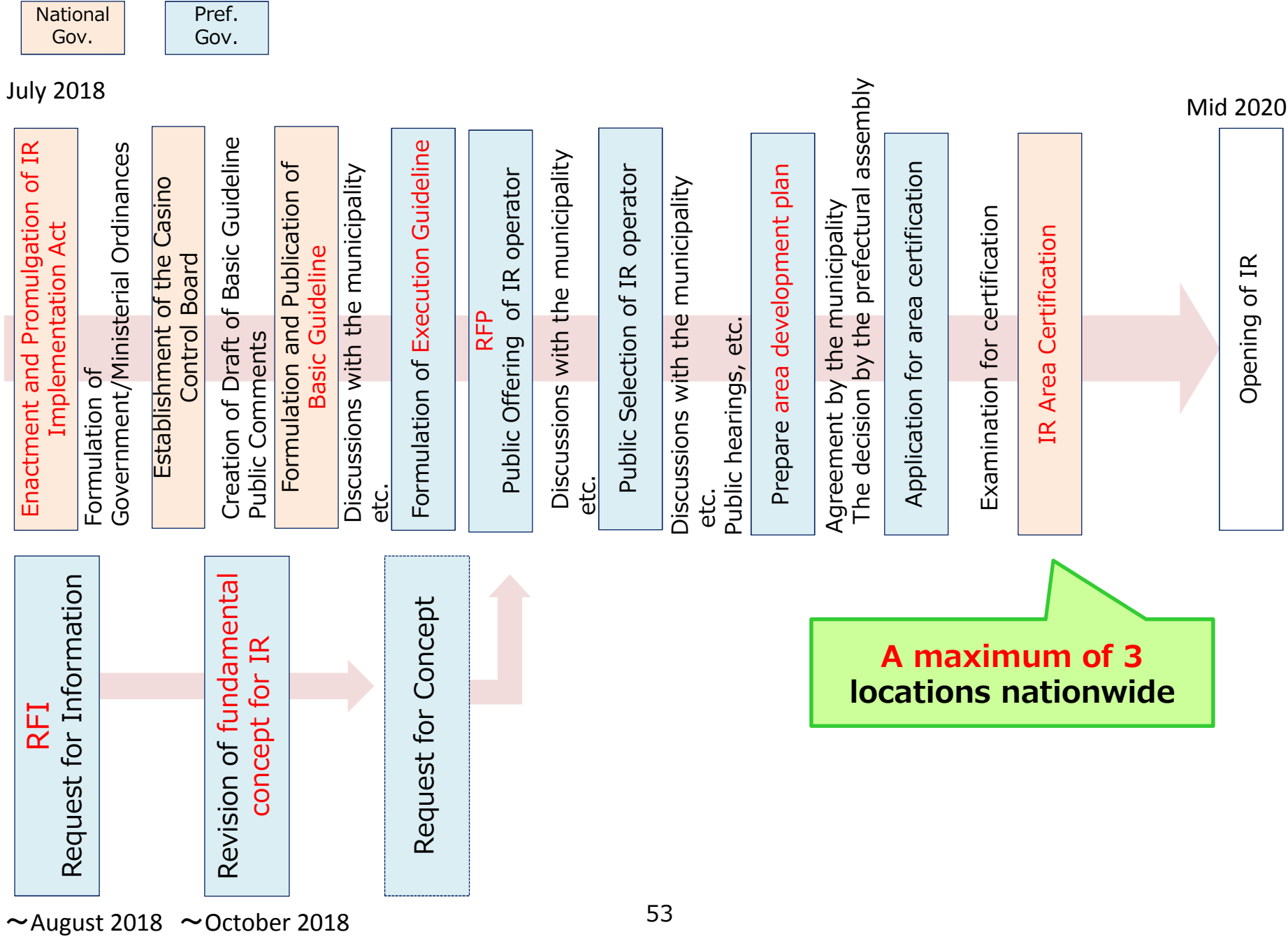
2. 郵送・FAX
裏面の申込用紙を企画総務課まで送付してください。

※ 会場の手配費用等は無料です。詳しくはお問い合わせください。

和歌山県企画総務課 TEL:073-441-2334 FAX:073-422-1812 担当：池内、梶谷

- 1 What is an IR (Integrated Resort)
- 2 Resort-type IR envisioned by Wakayama
- 3 Proposed site, Wakayama Marina City
- 4 Why Wakayama wants to establish an IR
- 5 IR issues and countermeasures
- 6 Next steps**

Next steps



Fundamental concept for Wakayama IR (Revised)

〒640-8585

1-1 Komatsubara-dori, Wakayama City, Wakayama Prefecture

Planning General Affairs Division Planning Department IR Promotions Office

Wakayama Prefectural Government

TEL : 073-441-2334

FAX : 073-422-1812

E-mail : e0201001@pref.wakayama.lg.jp

Relevant prefectural IR website

<https://www.pref.wakayama.lg.jp/prefg/020100/ir/top.html>